

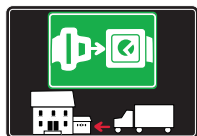
## WORKTOP CONNECTORS





# SYMBOLS AND FINISHES LEGEND

## SYMBOLS



= SHELF SAFELY LOCKED DURING TRANSPORTATION AND AT HOME.



= ANTI-TURNOVER LOCKING SYSTEM



= NORMS / PATENTS



= PHILLIPS / POZIDRIV



= NEWTON



= PART.NO



= HEXAGONAL SOCKET



= FRICTION



= PCS. PER PACKAGE



= BLADE SLOT



= AUTOMATIC



= COMBI SLOT



= DROP DOWN



= CAPACITY LOADING



= COUNTERSUNK HEAD



= WOOD / GLASS THICKNESS



= PAN HEAD



= STANDARD HINGE



= HOLE DIAMETER



= FLANGE HEAD



= KIMANA HINGE



= DIAMETER



= FLAT HEAD



= FLAP HINGE



= LENGTH



= TRILOBULAR SCREW



= WITH SPRING



= HEIGHT



= SELF-TAPPING SCREW



= WITHOUT SPRING



= RIGHT VERSION



= EURO THREAD



= REVERSED SPRING



= LEFT VERSION



= METRIC THREAD



= PRE-INSERTED SCREW



= FOR ROUND TUBE



= PCS. PER PAD



= PRE-INSERTED SCREW AND SPREADING BUSH



= FOR OVAL TUBE



= CUT ON REQUEST



= WITH BUFFER



= SELF ADHESIVE



= WITH MAGNET



= WITH FLANGE

NOTE: Printing errors and omissions may exist despite our best efforts to ensure accuracy. We reserve the right to alter specifications without notice.



## MATERIALS

<b>ZA</b> = Zinc Alloy	<b>ST</b> = Steel	<b>HSS</b> = High Speed Steel	<b>BR</b> = Brass	<b>ABS</b> = Acrylonitrile Butadiene Styrene
<b>ZAnk</b> = Nickel-plated Zinc Alloy	<b>STzk</b> = Zinc-plated Steel	<b>AL</b> = Aluminium	<b>WD</b> = Wood	<b>EVA</b> = Ethylene Vinyl Acetate

**EP** = **ENGINEERING PLASTIC**

+ **EP** = other engineering plastic available on request

**SR** = **SOFT RUBBER**

+ **SR** = other soft rubber available on request

**EPn** = Natural Engineering Plastic

**EPc** = Clear Engineering Plastic

**SRn** = Natural Soft Rubber

**EPw** = White Engineering Plastic

**EPg** = Grey Engineering Plastic

**SRw** = White Soft Rubber

**EPwg** = Water Green Engineering Plastic

**SRb** = Black Soft Rubber



## FINISHES



+ = OTHER FINISHES AVAILABLE ON REQUEST

PART. NO	FINISHES	PART. NO	FINISHES	PART. NO	FINISHES
AA	Natural	JB	Bright Aluminium	PZ	Beech
AB	White	JC	Aluminium - Chrome	QA	Maple
AC	Opal White	JD	Matt Aluminium	QB	Walnut
AE	White 9010	JE	Satin-finished Aluminium	WA	Bronzed
AK	Champagne	JF	Aluminium - Brass	WI	Burnished
AL	Ivory	JG	Aluminium 5	XD	Satin-finished Steel
EA	Black	JL	Aluminium PE 11	YA	Nickel-plated
EB	Glossy Black	JM	Aluminium RAL 9006	YB	Bright Nickel-plated
EC	Matt Black	KA	Chrome	YC	Matt Nickel-plated
GR	Raw	KB	Bright Chrome	YD	Satin-finished Nickel-plated
HA	Brass-Plated	KC	Matt Chrome	ZA	Zinc alloy
HH	Tropicalized	MA	Brown	ZN	Zinc-plated
HL	Raw Brass	MB	Light Brown 1	ZQ	Bright Gold
IA	Grey	NN	Metallic Beige	ZY	Titanium
IB	Metallic Grey	NO	Beige	ZZ	Clear
IF	Middle Grey	OA	Oak	00	Insignificant finish
IJ	Light Grey	OZ	Ash		
IL	Grey 20	PA	Light Ash		
JA	Aluminium	PY	Cherry		

# CONTENTS

## SHELF SUPPORTS

SECURY PALETTA .....	1.1
MINISECURY .....	1.1
PULL-IN CORNER BRACKET .....	1.3
K LINE .....	1.4
DUAL .....	1.6
SHELF RETAINER .....	1.7
FLIPPER .....	1.8
FLIPPER-BI .....	1.12
UNICO .....	1.16
SPRING .....	1.19
KERALA .....	1.21
MAORI .....	1.23
TRIS .....	1.30
TRIS SIDE BRACKET ROUND LEDGE .....	1.37
PK2 .....	1.42
PK2 SIDE BRACKET ROUND LEDGE .....	1.53
BLITZ .....	1.58
BLITZ SIDE BRACKET ROUND LEDGE .....	1.65
POKER .....	1.68
SECRET MAXI .....	1.78

## GLASS SHELF SUPPORTS

DREAM .....	2.1
K LINE .....	2.2
VERY .....	2.4
OR .....	2.4
ATAK .....	2.5
GEKO .....	2.6
KRISTAL .....	2.7
COBRA .....	2.11
PEKI .....	2.15
KUBIC .....	2.17
PULL .....	2.20

## WOOD AND GLASS SHELVING SYSTEMS

KAIMAN .....	3.1
KAIMAN MAXI .....	3.3
KALABRONE .....	3.5
KALABRONE MAXI .....	3.7
KALABRONE MINI .....	3.9
COBRONE .....	3.10
TRIADE MINI .....	3.12
TRIADE MINI AND BRACKET .....	3.14
TRIADE .....	3.16
TRIADE AND BRACKET .....	3.18
TRIADE MAXI .....	3.20
TRIADE MAXI AND BRACKET .....	3.22
TRIADE XXL .....	3.24
TRIADE XXL AND BRACKET .....	3.26
APPLICATION FOR ALL TRIADE VERSIONS .....	3.28

## CONNECTINGS

INSERT NUTS .....	4.1
SPREADING DOWELS .....	4.2
DOWELS .....	4.3
SLEEVES .....	4.4
FLAT HEAD SLEEVE NUTS AND CONNECTING SCREWS .....	4.5
SLEEVE NUTS AND CONNECTING SCREWS .....	4.6
PULL-IN CORNER BRACKET .....	4.7
IN FRAME DOOR (DOOR STOP AND CORNER BRACKET) .....	4.8
PAD .....	4.10
CROSS DOWELS .....	4.11
CAMS AND DOWELS .....	4.18
ELEFANT .....	4.25
SPIRAL LOCK .....	4.28
PLINTH CLIPS .....	4.31

## WORKTOP CONNECTORS

QUICK .....	5.1
BOX FOR QUICK Ø30 .....	5.5

## SCREWS

COUNTERSUNK HEAD WOOD SCREWS .....	6.1
PAN HEAD WOOD SCREWS .....	6.1
EURO SCREWS .....	6.2
FLANGE HEAD METRIC SCREWS .....	6.3
COUNTERSUNK HEAD METRIC SCREWS .....	6.3
ONE PIECE CONNECTOR SCREWS .....	6.4
ALLEN WRENCHES .....	6.6

## DOOR BUFFERS AND COVER CAPS

BI-MATERIAL .....	7.1
SOFT .....	7.1
DOOR BUFFERS .....	7.2
COVER CAPS .....	7.6
ECCENTRIC HOUSING COVER CAPS .....	7.8
NIKO .....	7.8.1
ADHESIVE HOLE COVERS .....	7.9

**OPENING SYSTEMS FOR FLAP AND DROP DOWN DOORS****8**

KRABY LIFT UP WITH STANDARD HINGES .....	8.1
KRABY 164 mm LIFT UP .....	8.2
KRABY 244 mm LIFT UP .....	8.4
KRABY 355 mm LIFT UP .....	8.6
KRABY 480 mm LIFT UP .....	8.8
KRABY LIFT UP WITH STANDARD HINGES WITH K PUSH WITH MAGNET .....	8.9
KRABY DROP DOWN WITH STANDARD HINGES .....	8.12
KRABY 164 mm DROP DOWN .....	8.13
KRABY 244 mm DROP DOWN .....	8.14
KRABY 355 mm DROP DOWN .....	8.15
KRABY DROP DOWN WITH KIMANA HINGES AND MAGNET K LOCK .....	8.16
KRABY DROP DOWN WITH FLAP HINGES AND MAGNET K LOCK .....	8.20
KRABY DROP DOWN WITH STANDARD HINGES AND K PUSH WITH MAGNET .....	8.23
KRABY DROP DOWN WITH KIMANA HINGES AND K PUSH WITH MAGNET .....	8.26
KRABY DROP DOWN WITH FLAP HINGES AND K PUSH WITH MAGNET .....	8.30
KRABY BRACKETS .....	8.33
KRABY ADAPTERS FOR ALUMINIUM FRAME DOOR .....	8.35
COMPACT LIFT UP WITH STANDARD HINGES .....	8.39
COMPACT 164 mm LIFT UP .....	8.40
COMPACT 244 mm LIFT UP .....	8.42
COMPACT 355 mm LIFT UP .....	8.44
COMPACT 480 mm LIFT UP .....	8.46
COMPACT LIFT UP WITH STANDARD HINGES WITH K PUSH WITH MAGNET .....	8.47
COMPACT DROP DOWN WITH STANDARD HINGES .....	8.50
COMPACT 164 mm DROP DOWN .....	8.51
COMPACT 244 mm DROP DOWN .....	8.52
COMPACT 355 mm DROP DOWN .....	8.53
COMPACT DROP DOWN WITH KIMANA HINGES AND MAGNET K LOCK .....	8.54
COMPACT DROP DOWN WITH FLAP HINGES AND MAGNET K LOCK .....	8.58
COMPACT DROP DOWN WITH STANDARD HINGES AND K PUSH WITH MAGNET .....	8.61
COMPACT DROP DOWN WITH KIMANA HINGES AND K PUSH WITH MAGNET .....	8.64
COMPACT DROP DOWN WITH FLAP HINGES AND K PUSH WITH MAGNET .....	8.68
COMPACT BRACKETS .....	8.71
COMPACT ADAPTERS FOR ALUMINIUM FRAME DOOR .....	8.72

**PUSH CATCHES & MAGNETIC CATCHES****9**

K PUSH .....	9.1
K LOCK .....	9.8
K PUSH AND K LOCK DOOR PLATES .....	9.10

**LEVELLERS****10**

INTEGRATO WITH ZINC ALLOY FOOT .....	10.1
INTEGRATO WITH ENGINEERING PLASTIC FOOT .....	10.7
INTEGRATO SPACERS .....	10.16
INTEGRATO Z .....	10.18
DEDALO .....	10.20
LEVELLER Ø14 .....	10.23
REKORD 12 .....	10.28
ATACAMA .....	10.34
ATACAMA J .....	10.38
ATACAMA J WITH HEIGHT ADAPTER .....	10.40.3

**HINGES****11**

KIMANA .....	11.1
KIMANA ADAPTERS .....	11.5

**HANGERS****12**

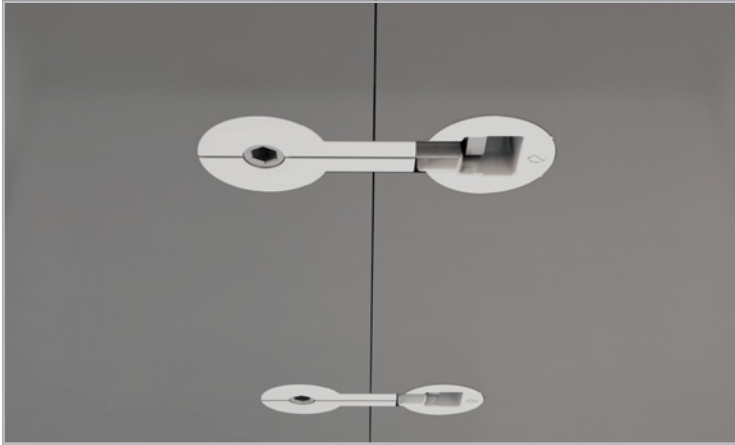
LIBRA HANGING SYSTEM LIVING SETTINGS .....	12.1
LIBRA H1 - H2 - H3 - H4 LIVING SETTINGS .....	12.2
LIBRA H1 .....	12.3
LIBRA H2 .....	12.5
LIBRA H3 .....	12.8
LIBRA H4 .....	12.11
LIBRA H6 AND LIBRA CH APPLICATIONS .....	12.14
LIBRA H6 LIVING SETTINGS .....	12.16
LIBRA H6 .....	12.17
LIBRA H6 AND LBRA CH LIVING SETTINGS .....	12.20
LIBRA CH .....	12.21
LIBRA H7 APPLICATIONS .....	12.24
LIBRA H7 SCREW FIXING LIVING SETTINGS .....	12.26
LIBRA H7 SCREW FIXING .....	12.27
LIBRA H7 DOWEL FIXING WITH ALUMINIUM BAR LIVING SETTINGS .....	12.30
LIBRA H7 DOWEL FIXING WITH ALUMINIUM BAR .....	12.31
LIBRA H7 SCREW FIXING WITH "PEG JOINT" FOR ALUMINIUM BAR .....	12.36
LIBRA H7 DOWEL FIXING WITHOUT "PEG JOINT" .....	12.38
LIBRA H7 AND LIBRA CH LIVING SETTINGS .....	12.39
LIBRA H7 AND LIBRA CH APPLICATIONS .....	12.40
LIBRA WALL PLATES .....	12.42
LIBRA COVER CAPS .....	12.44
LIBRA BS APPLICATIONS .....	12.46
LIBRA BS .....	12.48
LIBRA BS LEVELLER .....	12.59
LIKU .....	12.63

**WARDROBE TUBES SUPPORTS****13**


WARDROBE TUBES SUPPORTS .....	13.1
ELITE .....	13.2
LEADER .....	13.3

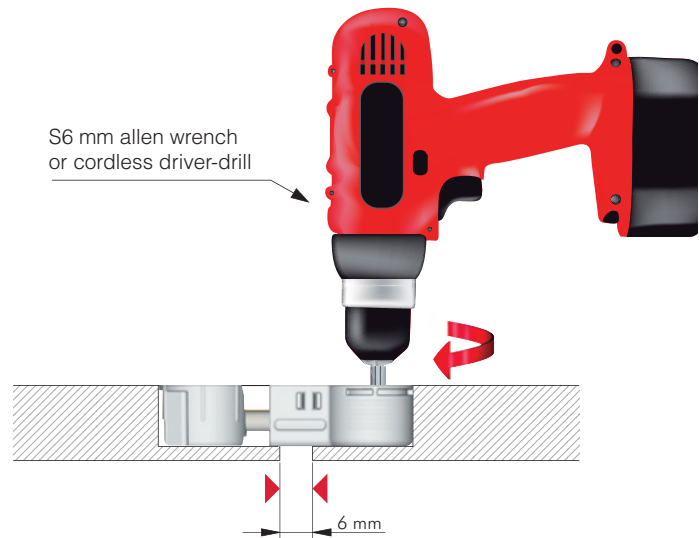
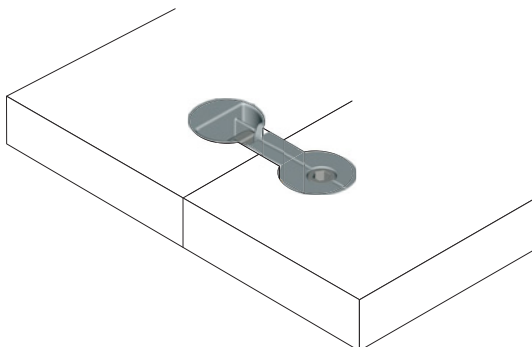
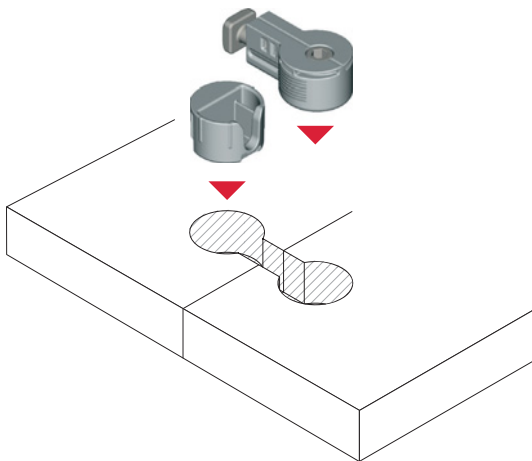


## QUICK

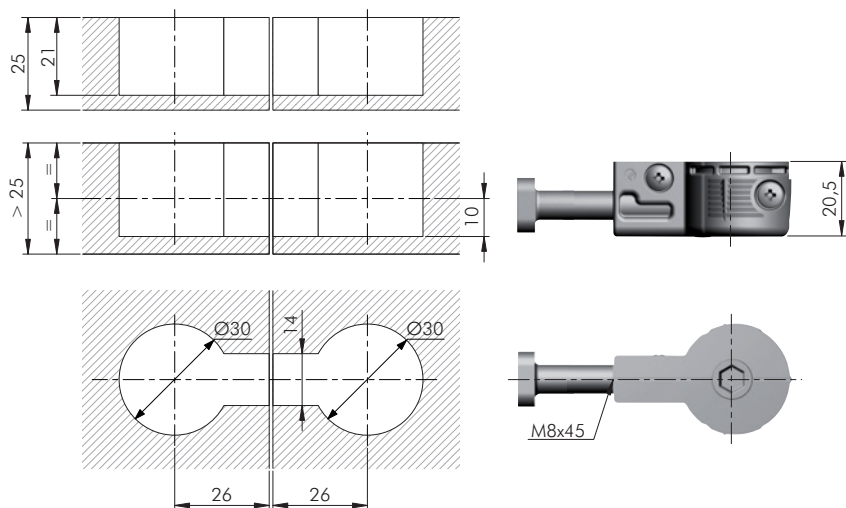


25 mm min. 

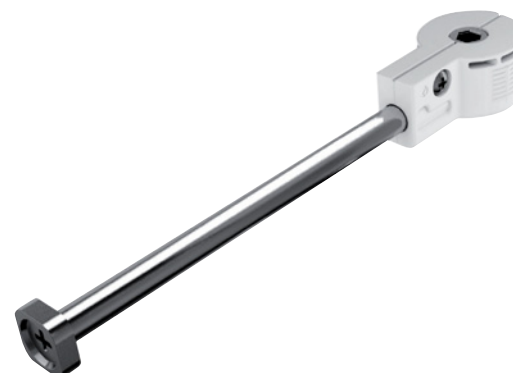
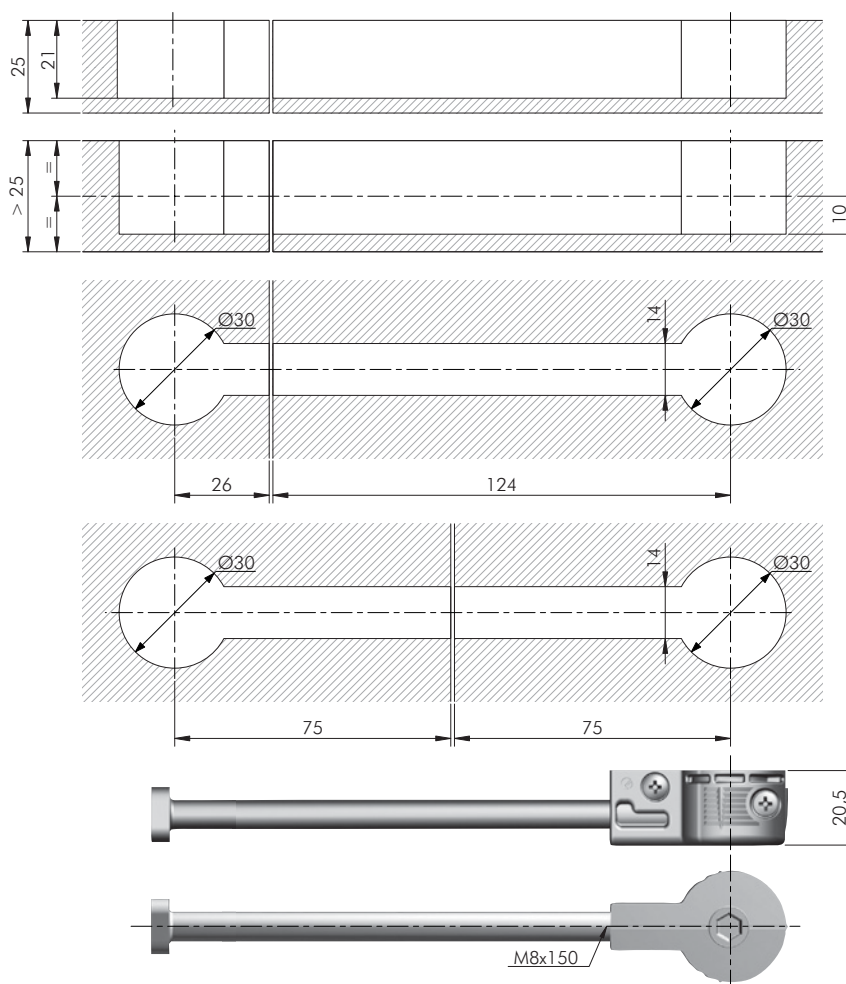
UNI 9429/89  
Tested in accordance with CATAS procedures 



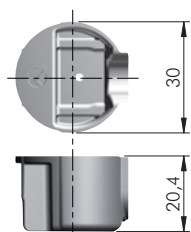
# WORKTOP CONNECTORS



= Ø 30 mm   
 = S6  
 ZA   ST   EP   
 = 350 pcs.  
 2161101000

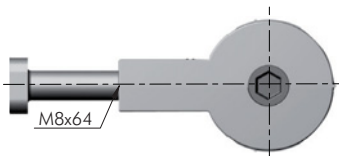
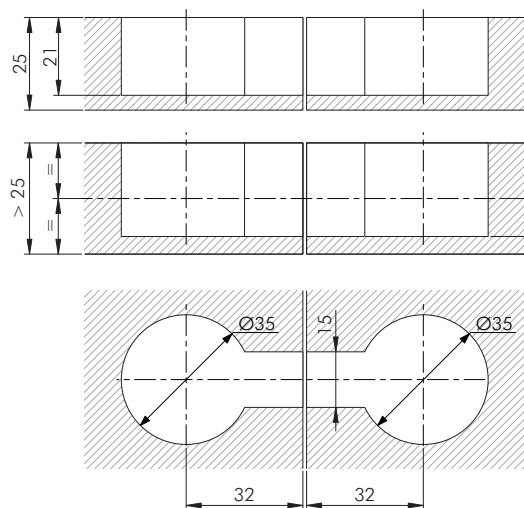


= Ø 30 mm   
 = S6  
 ZA   ST   EP   
 = 150 pcs.  
 2161102000

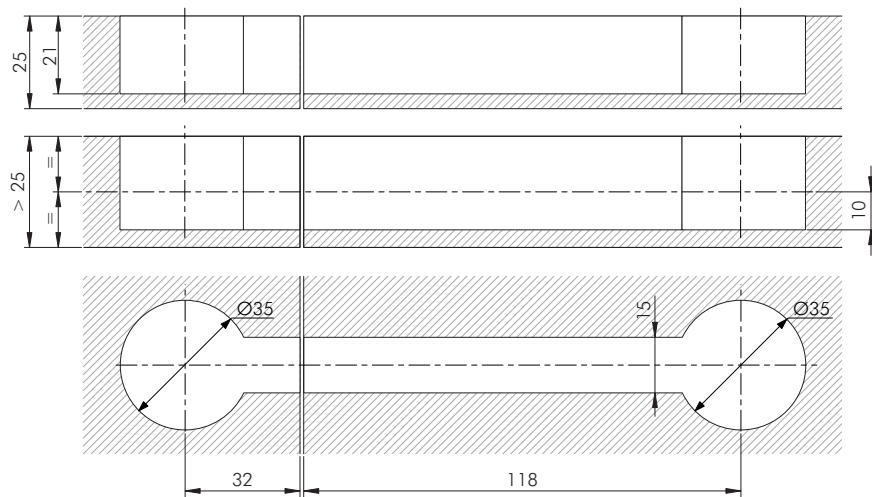


= Ø 30 mm  
 EP   
 = 700 pcs.  
 2161001000

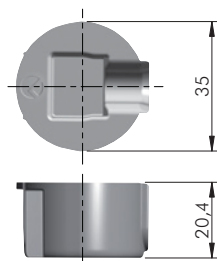
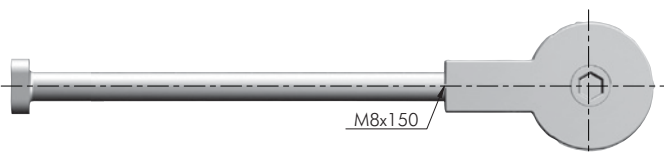




= Ø 35 mm    = S6  
 ZA   ST   EP   = 350 pcs.  
 123   
 2162101000

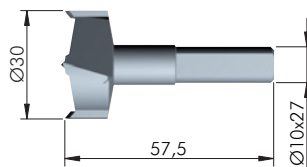
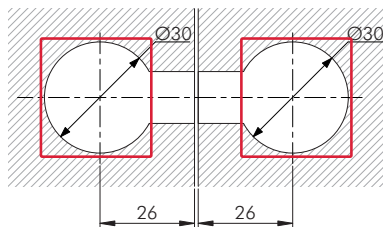


= Ø 35 mm    = S6  
 ZA   ST   EP   = 150 pcs.  
 123   
 2162102000




= Ø 35 mm  
 EP   = 700 pcs.  
 123   
 2162001000

## DRILL BIT FOR QUICK Ø 30 mm

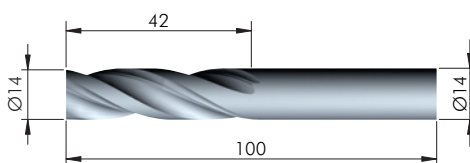
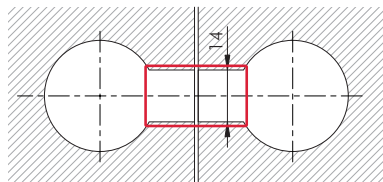


HSS


 = on request



2161309000



HSS

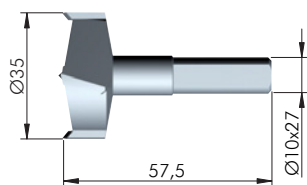
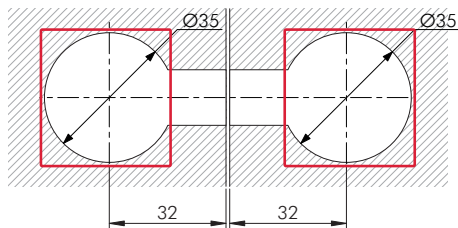
 = on request




1621453000



## DRILL BIT FOR QUICK Ø 35 mm

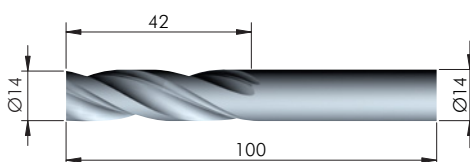
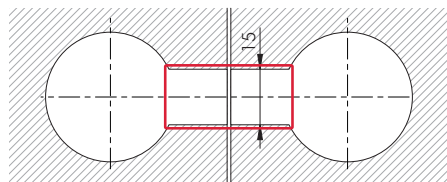


HSS


 = on request



3175201000



HSS

 = on request



1621453000

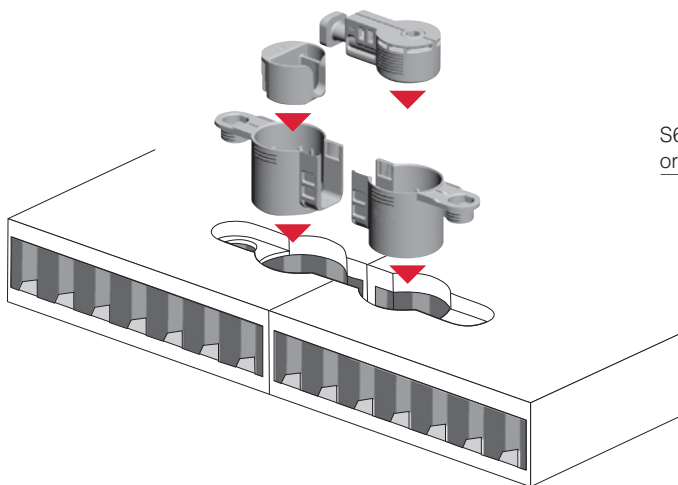




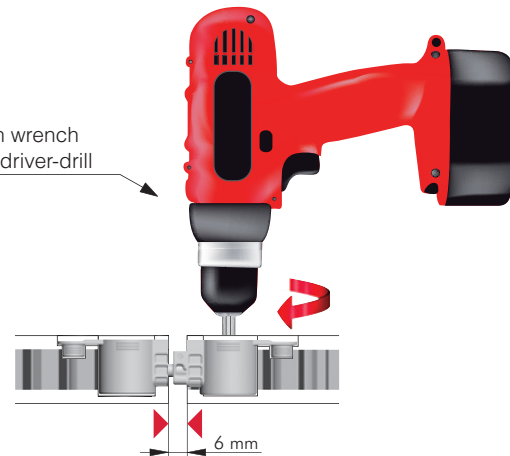
## BOX FOR QUICK Ø 30 AND COVER CAP



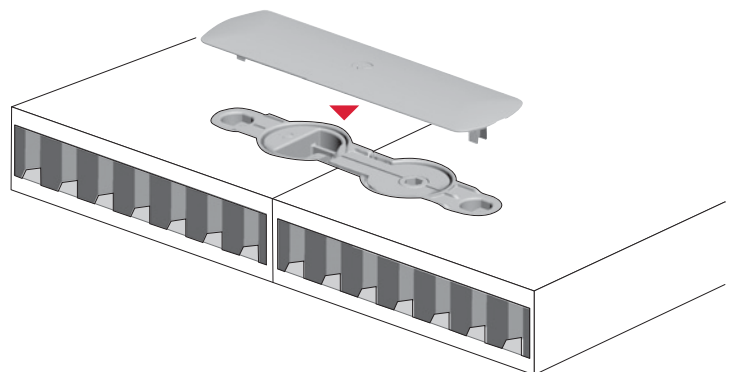
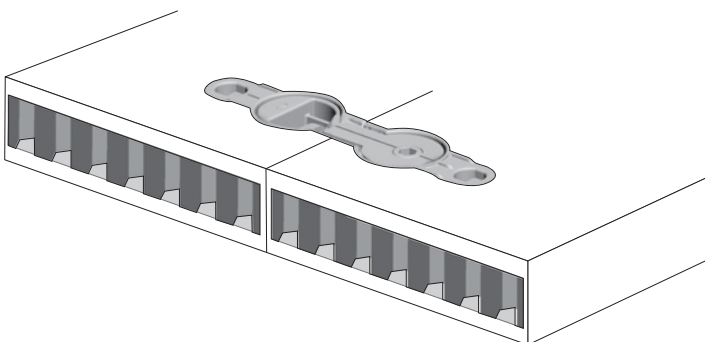
40 mm min.



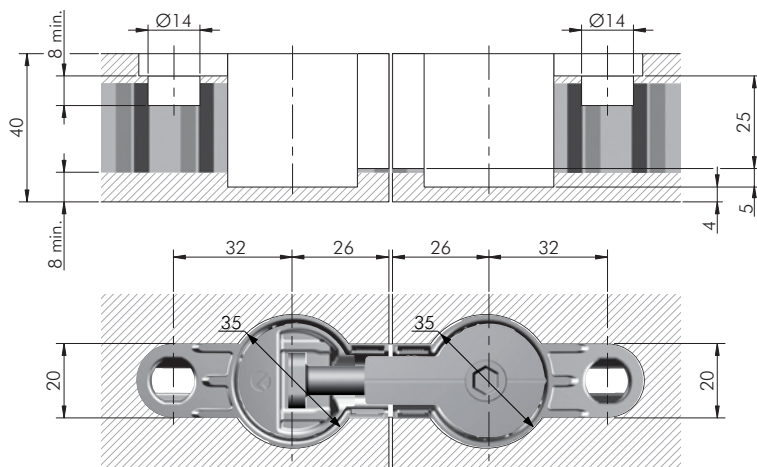
S6 mm allen wrench  
or cordless driver-drill



Captivating painted cover cap to be placed in position for  
connecting free standing shelvings together.



# WORKTOP CONNECTORS



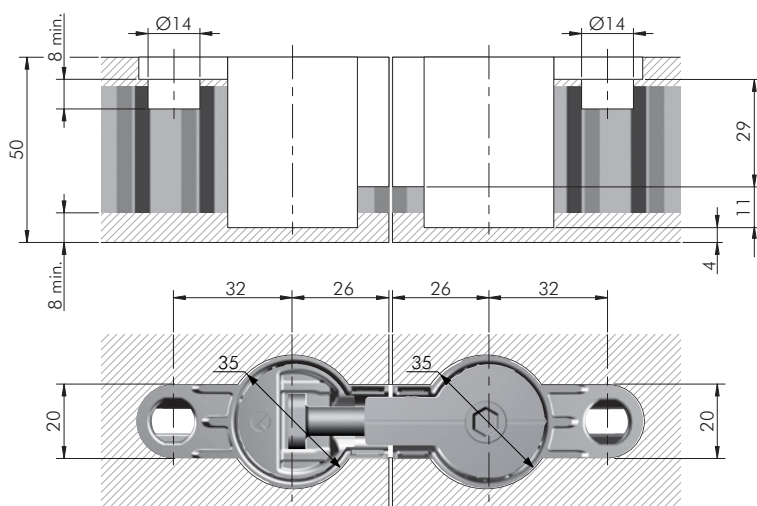
 = 40 mm

EP

 = 500 pcs.



2162201000



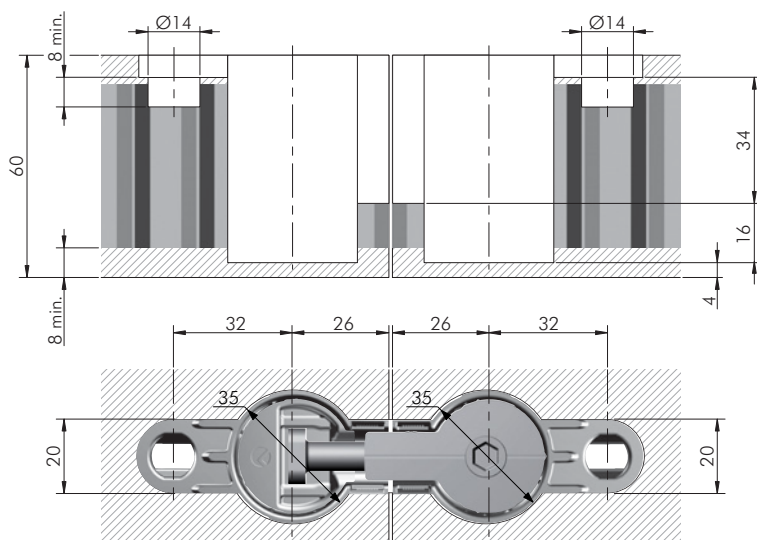
 = 50 mm

EP

 = 400 pcs.



2162203000



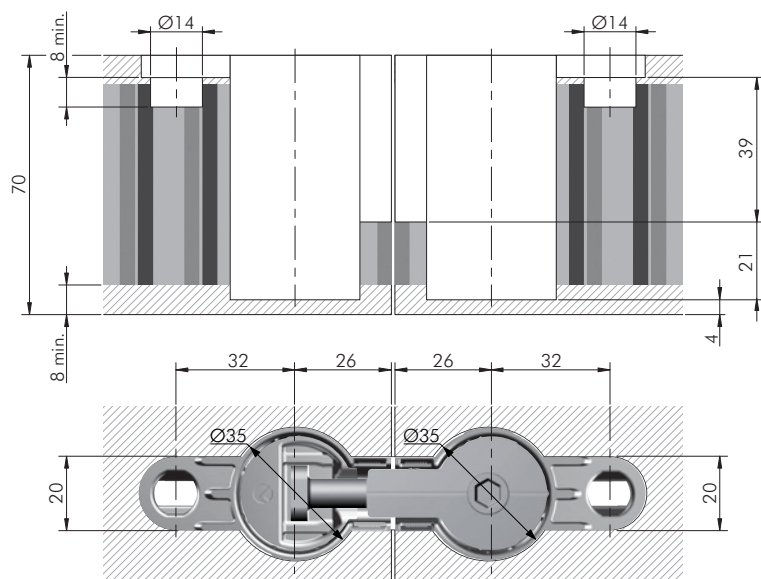
 = 60 mm

EP

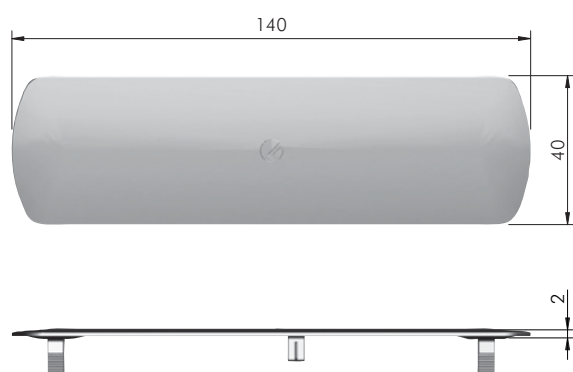
 = 400 pcs.



2162205000



## COVER CAP FOR BOX FOR QUICK Ø 30



= 70 mm

EP

= 100 pcs.



2162207000



EP

= on request



21622000JM

21622000KB