

## LIBRA H2



HANGERS

## LIBRA H1 - H2 - H3 - H4 LIVING SETTINGS



LIBRA H1



LIBRA H3



LIBRA H2



LIBRA H4



## LIBRA H2

LIBRA is the innovative family of CABINET HANGERS and WALL PLATES especially conceived to satisfy all the customer's needs. The LIBRA hangers are to be installed behind the rear panel with the only small cover caps left visible inside the cabinet. LIBRA is a very resistant and reliable solution as the zinc-coated steel body is sensibly thicker, and therefore stronger.

All the models within the LIBRA family feature an innovative ANTI-TURNOVER device which is covered by patent.

LIBRA H2 is the universal cabinet hanger with 3 dowels + rotary lever. The same reference can be mounted both on the right and the left side. It requires four Ø10mm drillings with 13mm depth on the sides.

Also featured in the LIBRA family are 5 types of wall plates and 1 types of wall bars made of very

thick zinc-coated steel and hardened by punched impressions.

Wall bars and wall plates feature oval holes which facilitate the correct positioning and give the possibility to carry out the horizontal adjustment. Placement of the holes for wall-fixation has been optimised to reduce the stress on the plates and on the plugs.

LIBRA cabinet hangers allow to adjust the cabinet vertically and horizontally. The 2 movements are 100% INDEPENDENT of each other and therefore make the adjustments much easier and more efficient.

The adjustment and the locking of the ANTI-TURNOVER bolt can be carried out from the inside of the cabinet by using a standard PZ2 screwdriver. The capacity loading of LIBRA H2 is 75 Kilos per piece.



UNI 68840:2004 - 75 kg per piece

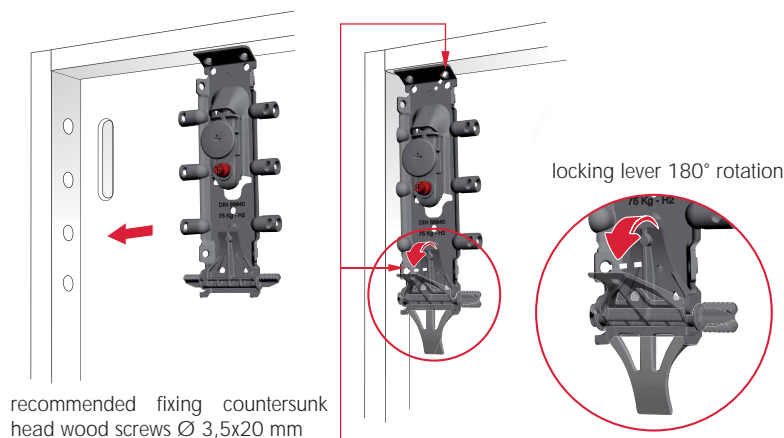


**PATENTED**

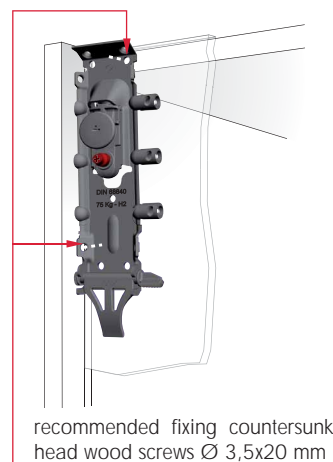
Certificates available on request.



### INSTALLATION UNDER THE CABINET TOP

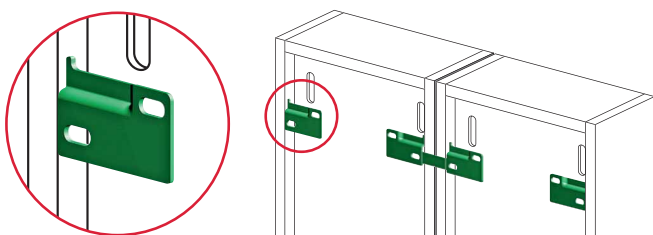


### ALTERNATIVE INSTALLATION



### INSTALLATION ON THE WALL

- For details refer to "LIBRA WALL PLATES"



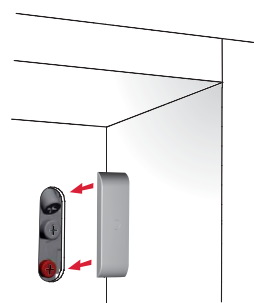
It is the responsibility of the customer:

- to ensure that the wall is of a suitable quality to hold the unit fixing in place.
- to use the proper hardware fittings according to the construction of the wall.

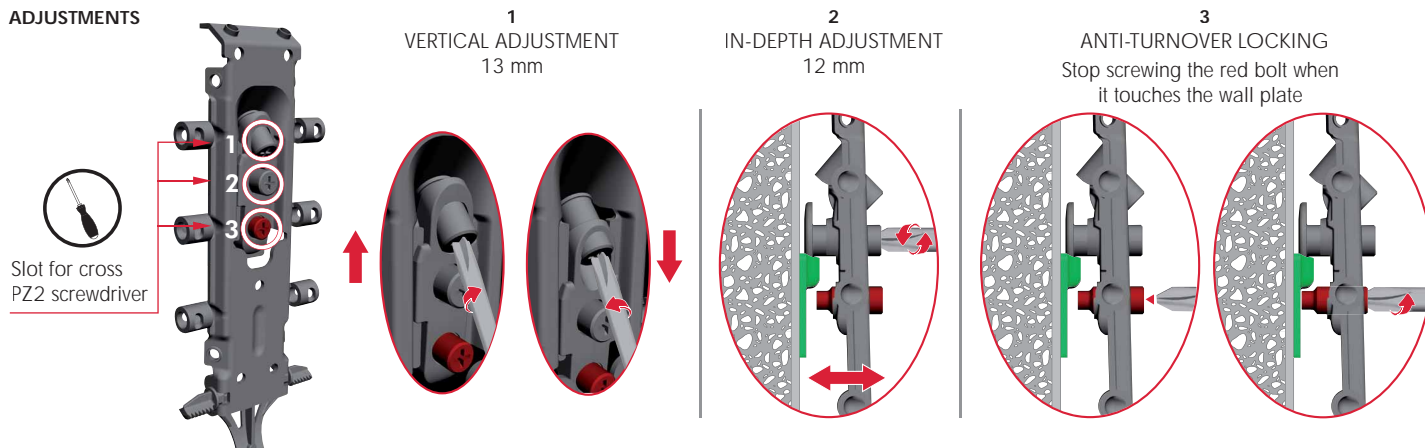
For more specific information, please refer to the WARNINGS section at the end of the catalogue.

### COVER CAP INSERTING

- For details refer to "LIBRA COVER CAPS"

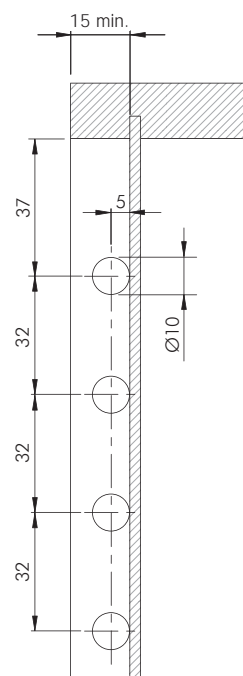


### ADJUSTMENTS



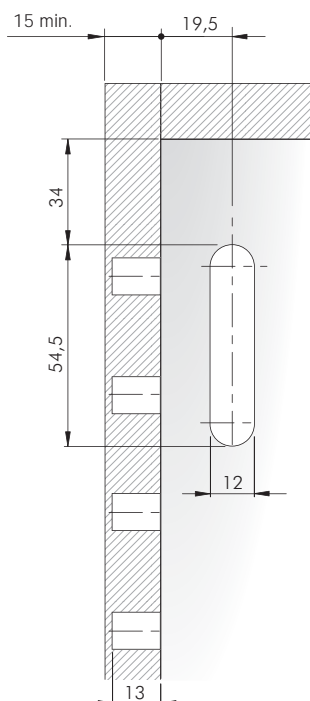
## DRILLING PLAN FOR LIBRA H2 FIXED UNDER THE CABINET TOP

## SIDE PANEL AND SERVICE GAP

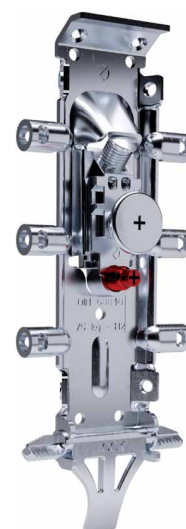
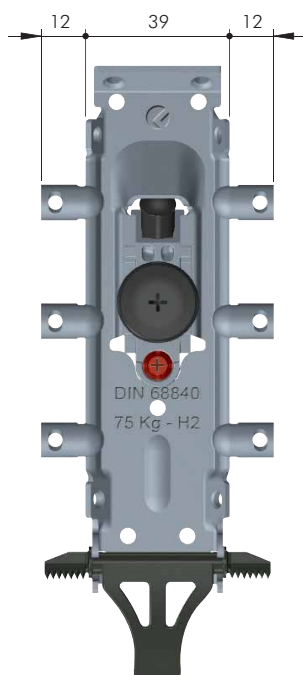
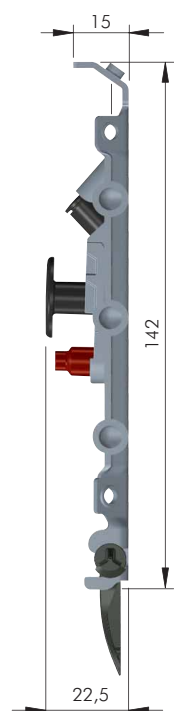
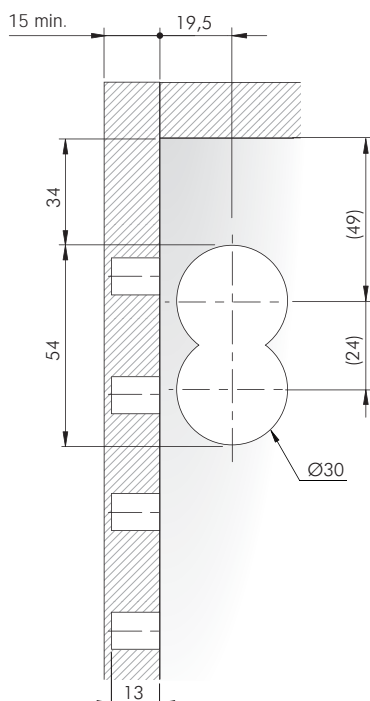


## BACK PANEL

Libra CC1-CC4-CC5 cover cap



Libra CC2 cover cap



= PZ2



ZA

ST



= 100 pcs.



63420020ZN



NOTE: for technical details about wall plates and cover caps please refer to the related sections "LIBRA WALL PLATES" on page 12.64 and "LIBRA COVER CAPS" on page 12.67.

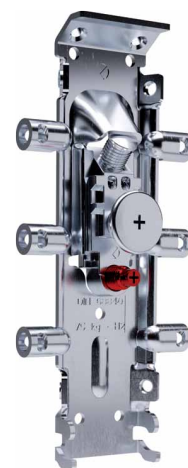
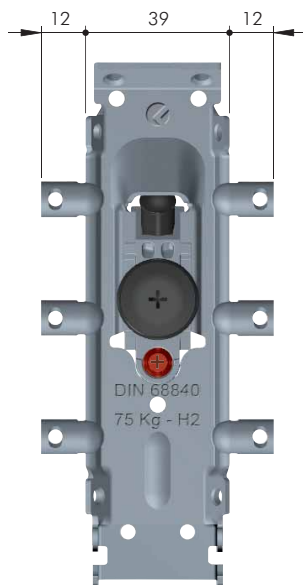
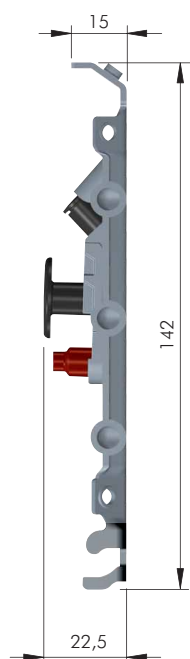
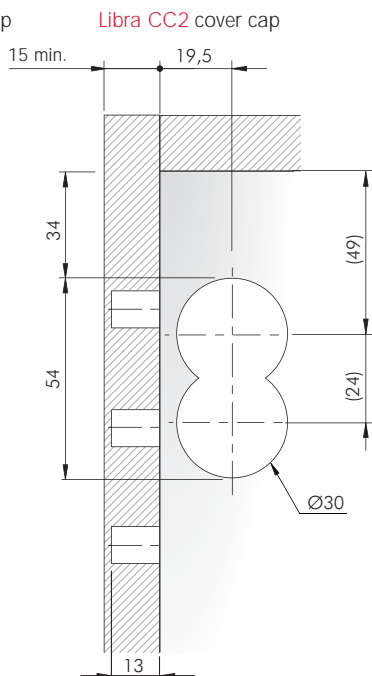
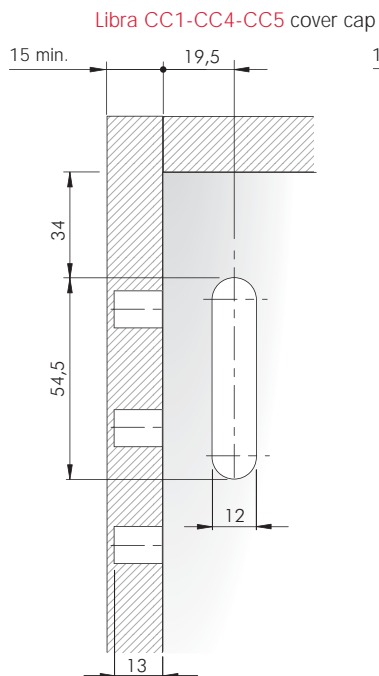
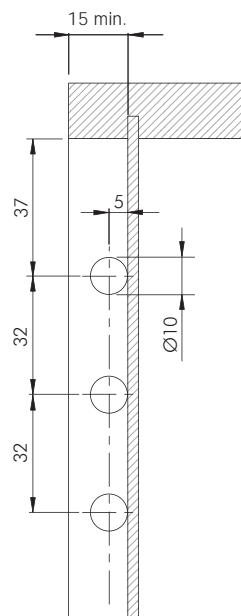


## LIBRA H2 WITHOUT ROTARY LEVER

DRILLING PLAN FOR LIBRA H2 FIXED UNDER THE CABINET TOP

SIDE PANEL AND SERVICE GAP

BACK PANEL



= PZ2

ZA

ST



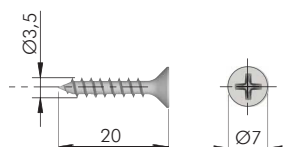
= 100 pcs.



63420030ZN

NOTE: for technical details about wall plates and cover caps please refer to the related sections "LIBRA WALL PLATES" on page 12.64 and "LIBRA COVER CAPS" on page 12.67.

## LIBRA H2 FIXING ACCESSORY



= PZ2



= 5.000 pcs.

ST



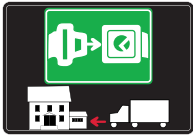
60101410ZN





# SYMBOLS AND FINISHES LEGEND

## SYMBOLS



= SHELF SAFELY LOCKED DURING  
TRANSPORTATION AND AT HOME.



= ANTI-TURNOVER LOCKING SYSTEM



= NORMS / PATENTS



= PHILLIPS / POZIDRIV



= WITH BUFFER



= PART NO.



= BLADE SLOT



= WITH MAGNET



= PCS. PER PACKAGE



= COMBI SLOT



= HEXAGONAL SOCKET



= NEWTON



= CAPACITY LOADING



= HEXALOBULAR SOCKET



= FRICTION



= WOOD / GLASS  
THICKNESS



= COUNTERSUNK HEAD



= AUTOMATIC



= HOLE DIAMETER



= PAN HEAD



= DROP DOWN



= DIAMETER



= FLANGE HEAD



= LENGTH



= FLAT HEAD



= STANDARD HINGE



= HEIGHT



= TRILOBULAR SCREW



= KIMANA HINGE



= RIGHT VERSION



= SELF-TAPPING SCREW



= FLAP HINGE



= LEFT VERSION



= EURO THREAD



= WITH SPRING



= SETTING CODE



= METRIC THREAD



= WITHOUT SPRING



= PCS. PER PAD



= PRE-INSERTED SCREW



= REVERSED SPRING



= CUT ON REQUEST



= PRE-INSERTED SCREW  
AND SPREADING BUSH



= SELF ADHESIVE



= WITH FLANGE

NOTE: Printing errors and omissions may exist despite our best efforts to ensure accuracy. We reserve the right to alter specifications without notice.

## MATERIALS

<b>ZA</b> = Zinc Alloy	<b>ST</b> = Steel	<b>HSS</b> = High Speed Steel	<b>BR</b> = Brass	<b>ABS</b> = Acrylonitrile Butadiene Styrene	<b>TPU</b> = Thermoplastic Polyurethane
<b>ZAnk</b> = Nickel-plated Zinc Alloy	<b>STzk</b> = Zinc-plated Steel	<b>AL</b> = Aluminium	<b>WD</b> = Wood	<b>EVA</b> = Ethylene Vinyl Acetate	

<b>EP</b> = <b>ENGINEERING PLASTIC</b>	+ <b>EP</b> = other engineering plastic available on request	<b>SR</b> = <b>SOFT RUBBER</b>	+ <b>SR</b> = other soft rubber available on request
--	--	--------------------------------	--

<b>EPn</b> = Natural Engineering Plastic	<b>EPc</b> = Clear Engineering Plastic	<b>SRn</b> = Natural Soft Rubber
<b>EPw</b> = White Engineering Plastic	<b>EPg</b> = Grey Engineering Plastic	<b>SRw</b> = White Soft Rubber
<b>EPb</b> = Black Engineering Plastic	<b>EPa</b> = Anthracite Engineering Plastic	<b>SRb</b> = Black Soft Rubber

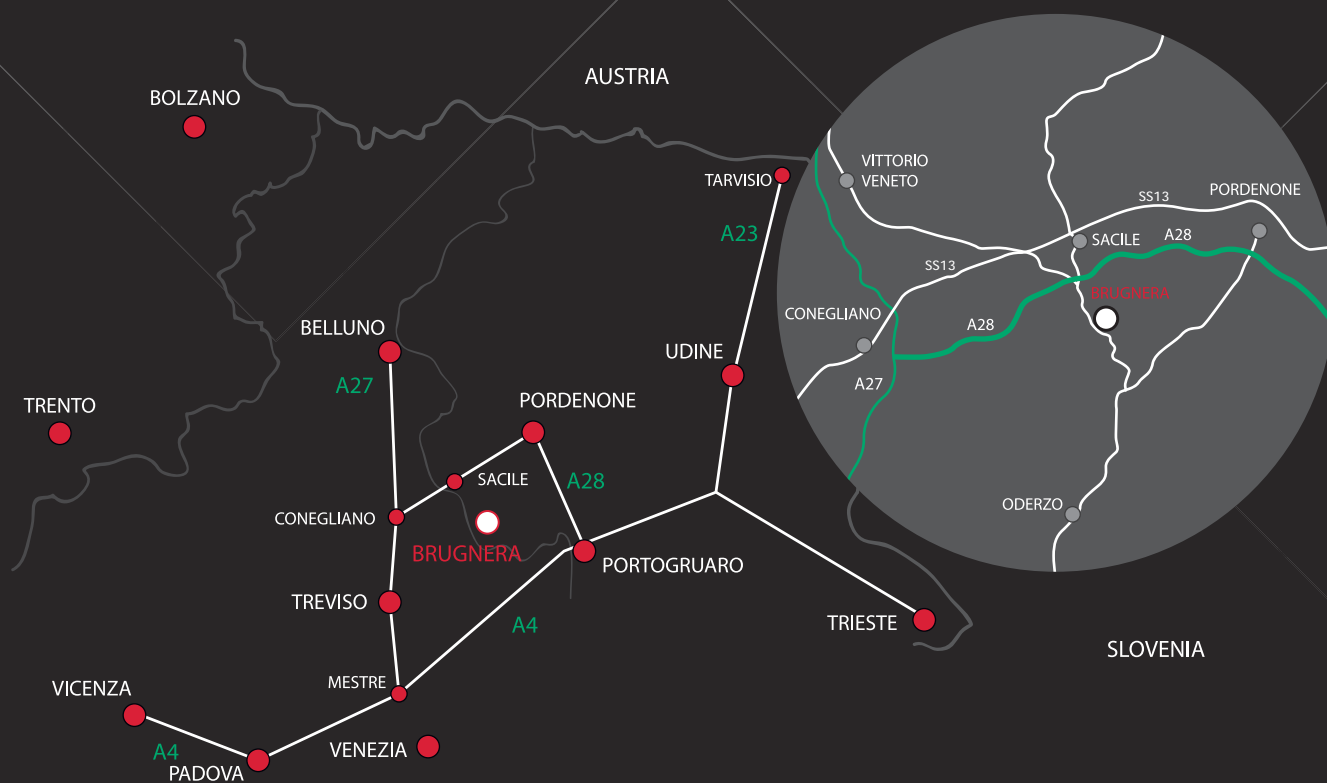


## FINISHES



+ OTHER FINISHES AVAILABLE ON REQUEST

PART NO.	FINISHES	PART NO.	FINISHES	PART NO.	FINISHES
<b>00</b>	Insignificant finish	<b>IF</b>	Grey 7	<b>XE</b>	Inox
<b>AA</b>	Natural	<b>IJ</b>	Light Grey	<b>YA</b>	Nickel-plated
<b>AB</b>	White	<b>IL</b>	Grey 20	<b>YC</b>	Matt Nickel-plated
<b>AE</b>	White 9010	<b>IN</b>	Grey met. 26	<b>YD</b>	Satin-finished Nickel-plated
<b>EA</b>	Black	<b>JG</b>	Aluminium 5	<b>YQ</b>	Black Nickel
<b>EC</b>	Matt Black	<b>JL</b>	Aluminium PE 11	<b>Z9</b>	Black Zinc
<b>EE</b>	Anthracite	<b>JM</b>	Aluminium RAL 9006	<b>ZN</b>	Zinc-plated
<b>EW</b>	Grey 9007	<b>KB</b>	Bright Chrome	<b>ZQ</b>	Bright Gold
<b>FU</b>	Gunmetal	<b>KC</b>	Matt Chrome	<b>ZZ</b>	Clear/Transparent
<b>FV</b>	Gunmetal V52	<b>LD</b>	Brown 8019		
<b>GR</b>	Zamak Raw	<b>RO</b>	Red		
<b>HA</b>	Brass-Plated	<b>UT</b>	T-Met 9007		
<b>HH</b>	Tropicalized	<b>UZ</b>	T-Met		
<b>HL</b>	Raw Brass	<b>WA</b>	Bronzed		
<b>HX</b>	Graphite	<b>WI</b>	Burnished		
<b>IA</b>	Grey	<b>XD</b>	Satin-finished Steel		



[www.italianaferramenta.com](http://www.italianaferramenta.com)

ITALIANA FERRAMENTA SRL - Viale Europa 17 I - 33070 Brugnara (PN)  
Tel. +39 0434 428211 Fax +39 0434 428242 E-mail: [info@italianaferramenta.it](mailto:info@italianaferramenta.it)