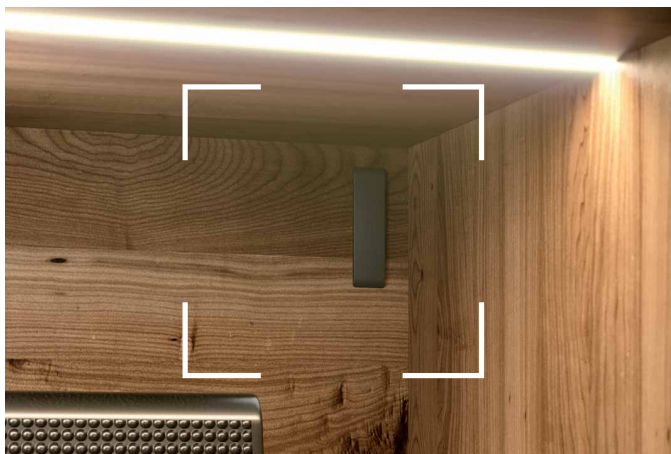


LIBRA H6



HANGERS

LIBRA H6 LIVING SETTINGS



WALL CABINET APPLICATION

- Loading capacity 120 Kilos per piece (240 Kilos per pair). In accordance with the European Regulation DIN 68840.



LIBRA H6

The LIBRA hangers are to be installed behind the rear panel with the only small cover caps left visible inside the cabinet. All the models within the LIBRA family feature an innovative ANTI-TURNOVER device which is covered by patent.

LIBRA H6 is a very resistant and reliable solution for suspended base units as the zinc alloy body is sensibly thicker, and therefore stronger.

LIBRA H6 is a left/right cabinet hanger with two semi-circular pins Ø15mm and a pre-inserted screw for the top.

It features an innovative locking device to the side panel conceived to sensibly increase the capacity loading of the cabinet.

The axial-locking of LIBRA H6 allows the fixing screw to penetrate the side panel beyond the back panel groove.

Also featured in the LIBRA family are 5 types of wall plates and 1 types of wall bars made of very thick zinc-coated steel and hardened by punched impressions.

Wall bars and wall plates feature oval holes which facilitate the correct positioning and give the possibility to carry out the horizontal adjustment.

Placement of the holes for wall-fixation has been optimised to reduce the stress on the plates and on the plugs.

LIBRA cabinet hangers allow to adjust the cabinet vertically and horizontally. The 2 movements are 100% INDEPENDENT of each other and therefore make the adjustments much easier and more efficient.

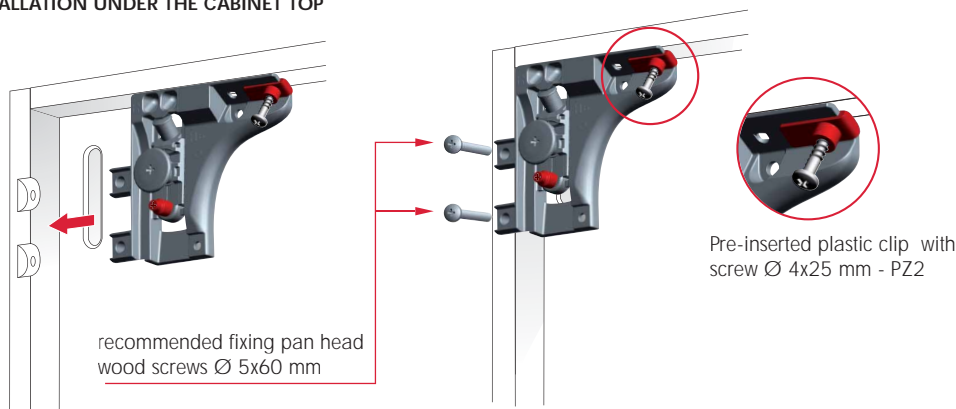
The adjustment and the locking of the ANTI-TURNOVER bolt can be carried out from the inside of the cabinet by using a standard PZ2 screwdriver.



PATENTED

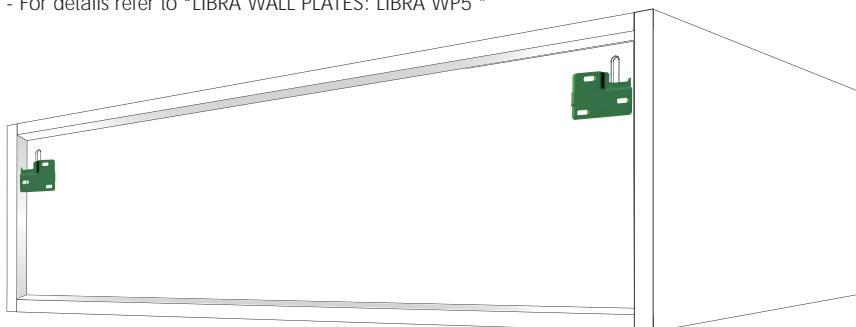


INSTALLATION UNDER THE CABINET TOP



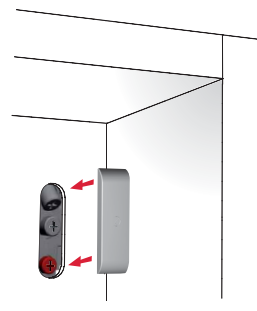
INSTALLATION ON THE WALL

- For details refer to "LIBRA WALL PLATES: LIBRA WP5 "



COVER CAP INSERTING

- For details refer to "LIBRA COVER CAPS"



It is the responsibility of the customer:

- to ensure that the wall is of a suitable quality to hold the unit fixing in place.
- to use the proper hardware fittings according to the construction of the wall.

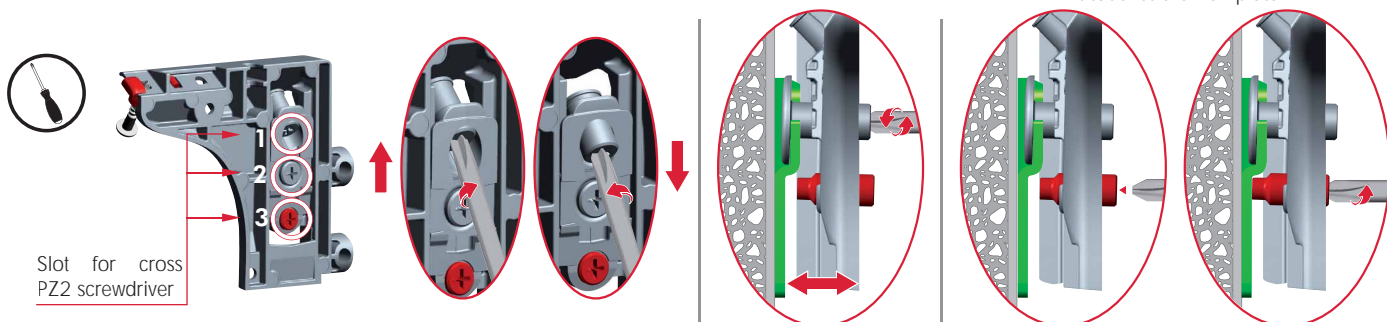
For more specific information, please refer to the WARNINGS section at the end of the catalogue.

ADJUSTMENTS

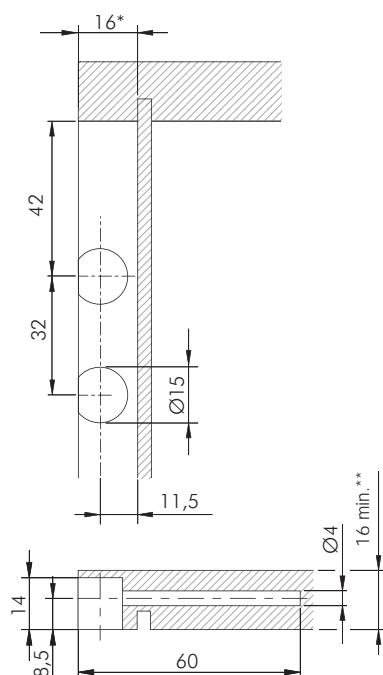
1
VERTICAL ADJUSTMENT
13 mm

2
IN-DEPTH ADJUSTMENT
12 mm

3
ANTI-TURNOVER LOCKING
Stop screwing the red bolt when it touches the wall plate



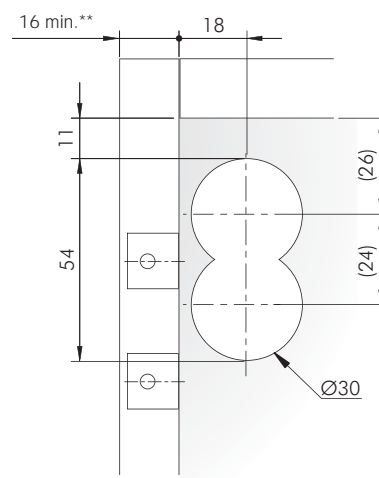
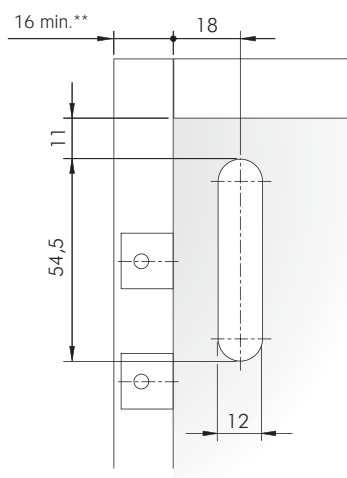
DRILLING PLAN FOR LIBRA H6
SIDE PANEL AND SERVICE GAP



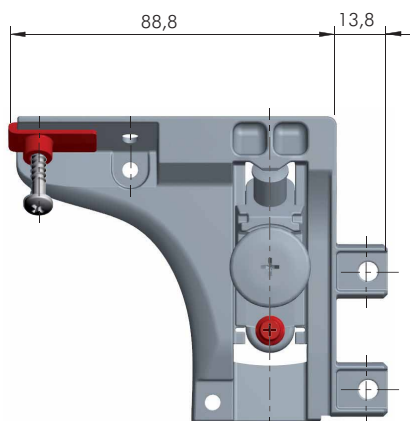
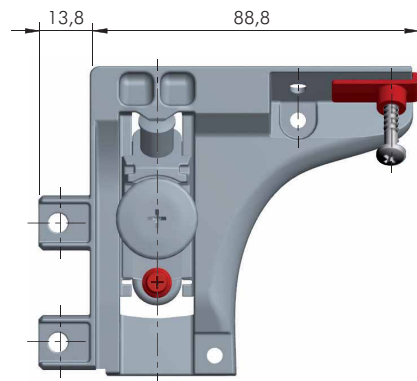
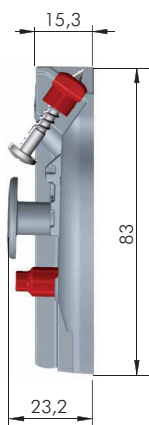
BACK PANEL

Libra CC1-CC4-CC5 cover cap

Libra CC2 cover cap



* Our technical department is at your disposal for different service gap options.
** For side panel 15 mm thick use "Libra H6 SPACER - 1 mm".



= PZ2

ZA

ST



= 50 pcs.



63420500ZN



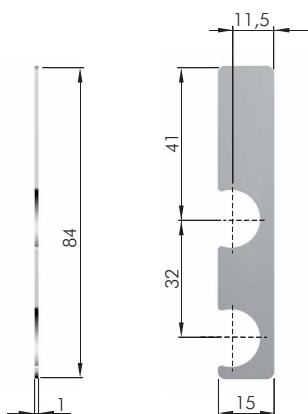
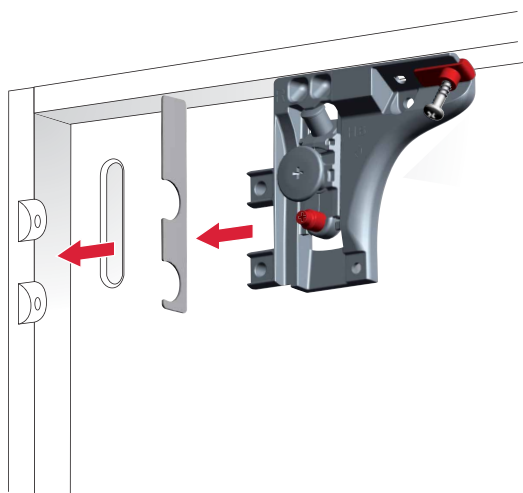
63420510ZN



NOTE: for technical details about wall plates and cover caps please refer to the related sections "LIBRA WALL PLATES" on page 12.64 and "LIBRA COVER CAPS" on page 12.67.

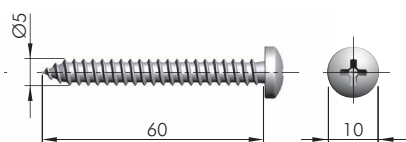


LIBRA H6 SPACER - 1 mm



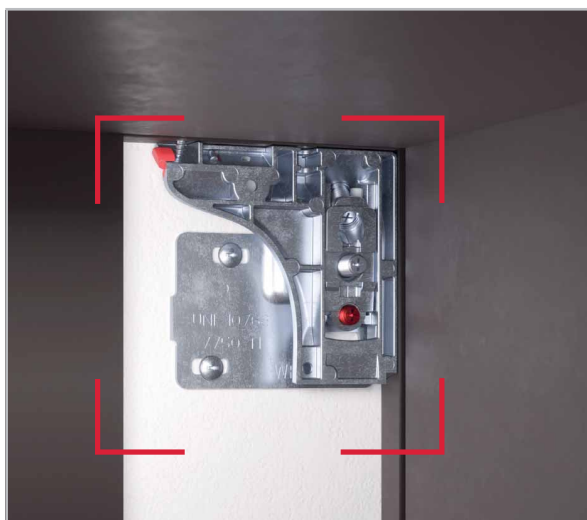
ST	= on request
123 63490510XE	

LIBRA H6 FIXING ACCESSORY



= Ø 4 mm = PZ2 ST	= on request
123 60103560ZN	

LIBRA H6 and LIBRA CH LIVING SETTINGS



LIBRA H6



LIBRA CH



LIBRA H6 and LIBRA CH APPLICATIONS

BENEFITS OF LIBRA H6 AND LIBRA CH HANGING SYSTEMS:

- Vertical and in-depth adjustments, as well as the locking of the cabinet, can be easily and smoothly carried out from the inside.
- The hanging system is never interfering with the slides for drawers as it is placed behind the back panel.
- Absolutely no mills, drillings or grooves required inside the cabinet.

In the **current absence of a unifying European norm** which sets the standards for testing procedures aimed at defining loading capacities of hanging systems conceived for suspended base units, we Italiana Ferramenta have simulated some of the most critical scenarios.

The following simulations are meant to give our customers valid reference points concerning cabinet dimensions, weights, recommended loading capacity even when loaded drawers are opened.

The reported data, empirically obtained, exclusively refer to the constructions and examples shown, correctly positioned and assembled by using WP5 wall plate.

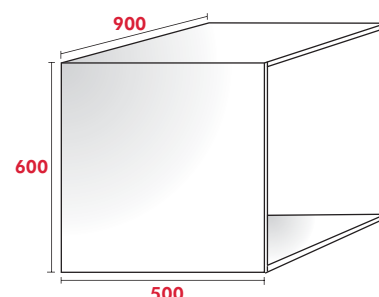
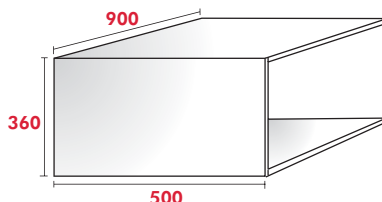
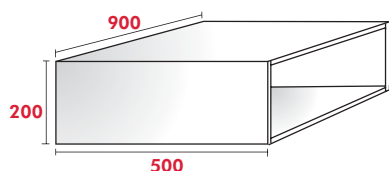
The customer must ensure that the wall is of suitable quality and structure.


Other important factors to be taken into consideration are determined by:


- the type of side panel, the actual thickness and the material used. It is recommended to use chipboard panels. For MDF panels please contact us for further information concerning the screw fixing.
- the type and dimensions of the screws used.
- the actual positioning, depth and width of the groove milled for the back side installation.
- the loading capacity of the drawer slides used as well as the actual construction of the drawer.


We always recommend to test a complete cabinet.

For cases which differ from the ones reported, please contact us.



FURNITURE TYPE	LOADING CAPACITY 	
	LIBRA H6	LIBRA H6 + 1 LIBRA CH
Cabinet	100 kg	150 kg
Cabinet + drawer	70 kg + 30 kg	120 kg + 30 kg

FURNITURE TYPE	LOADING CAPACITY 	
	LIBRA H6	LIBRA H6 + 1 LIBRA CH
Cabinet	180 kg	230 kg
Cabinet + drawer	150 kg + 30 kg	180 kg + 50 kg

FURNITURE TYPE	LOADING CAPACITY 	
	LIBRA H6	LIBRA H6 + 1 LIBRA CH
Cabinet	200 kg	230 kg
Cabinet + drawer	170 kg + 30 kg	170 kg + 50 kg

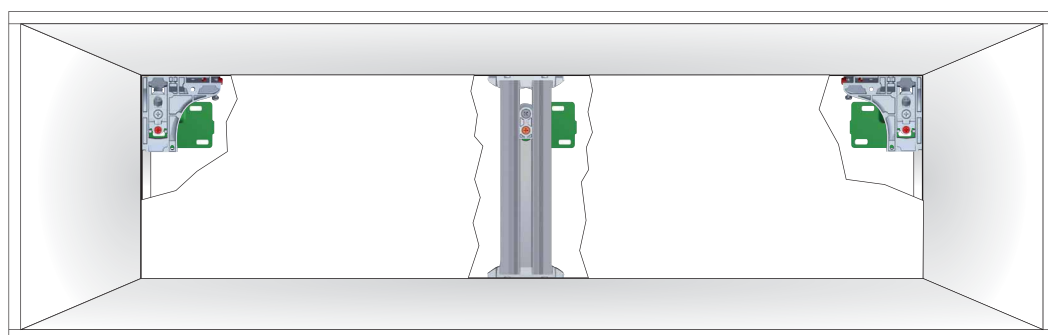
The reported data, empirically obtained, exclusively refer to the constructions and examples shown, correctly positioned and assembled by using WP5 wall plate.

LIBRA H6

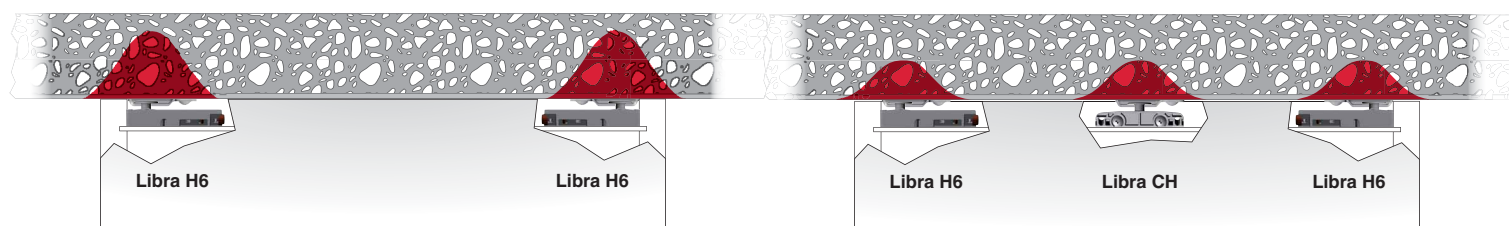
LIBRA CH



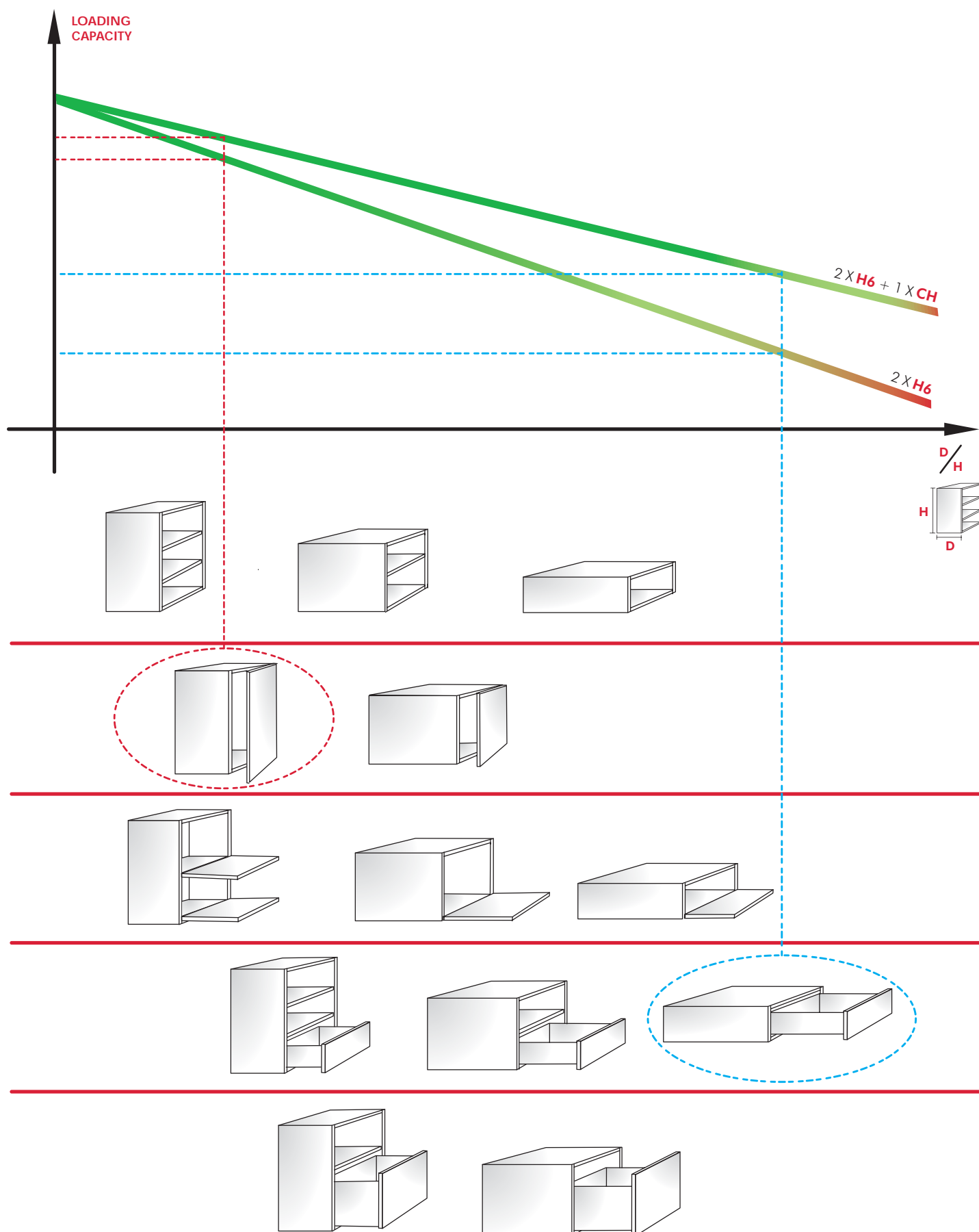
LIBRA WP5



 = STRESS INTENSITY LEVEL ON THE WALL



By adding Libra CH to Libra H6, the loading capacity is more evenly distributed, thus sensibly reducing the stress intensity level on the wall.

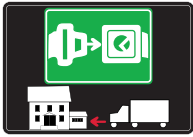
DEMONSTRATION SCHEME : WHERE AND HOW TO USE LIBRA H6 AND LIBRA CH





SYMBOLS AND FINISHES LEGEND

SYMBOLS



= SHELF SAFELY LOCKED DURING
TRANSPORTATION AND AT HOME.



= ANTI-TURNOVER LOCKING SYSTEM



= NORMS / PATENTS



= PHILLIPS / POZIDRIV



= WITH BUFFER



= PART NO.



= BLADE SLOT



= WITH MAGNET



= PCS. PER PACKAGE



= COMBI SLOT



= HEXAGONAL SOCKET



= NEWTON



= CAPACITY LOADING



= HEXALOBULAR SOCKET



= FRICTION



= WOOD / GLASS
THICKNESS



= COUNTERSUNK HEAD



= AUTOMATIC



= HOLE DIAMETER



= PAN HEAD



= DROP DOWN



= DIAMETER



= FLANGE HEAD



= LENGTH



= FLAT HEAD



= STANDARD HINGE



= HEIGHT



= TRILOBULAR SCREW



= KIMANA HINGE



= RIGHT VERSION



= SELF-TAPPING SCREW



= FLAP HINGE



= LEFT VERSION



= EURO THREAD



= WITH SPRING



= SETTING CODE



= METRIC THREAD



= WITHOUT SPRING



= PCS. PER PAD



= PRE-INSERTED SCREW



= REVERSED SPRING



= CUT ON REQUEST



= PRE-INSERTED SCREW
AND SPREADING BUSH



= SELF ADHESIVE



= WITH FLANGE

NOTE: Printing errors and omissions may exist despite our best efforts to ensure accuracy. We reserve the right to alter specifications without notice.

MATERIALS

ZA = Zinc Alloy	ST = Steel	HSS = High Speed Steel	BR = Brass	ABS = Acrylonitrile Butadiene Styrene	TPU = Thermoplastic Polyurethane
ZAnk = Nickel-plated Zinc Alloy	STzk = Zinc-plated Steel	AL = Aluminium	WD = Wood	EVA = Ethylene Vinyl Acetate	

EP = ENGINEERING PLASTIC	+ EP = other engineering plastic available on request	SR = SOFT RUBBER	+ SR = other soft rubber available on request
--	--	--------------------------------	--

EPn = Natural Engineering Plastic	EPc = Clear Engineering Plastic	SRn = Natural Soft Rubber
EPw = White Engineering Plastic	EPg = Grey Engineering Plastic	SRw = White Soft Rubber
EPb = Black Engineering Plastic	EPa = Anthracite Engineering Plastic	SRb = Black Soft Rubber

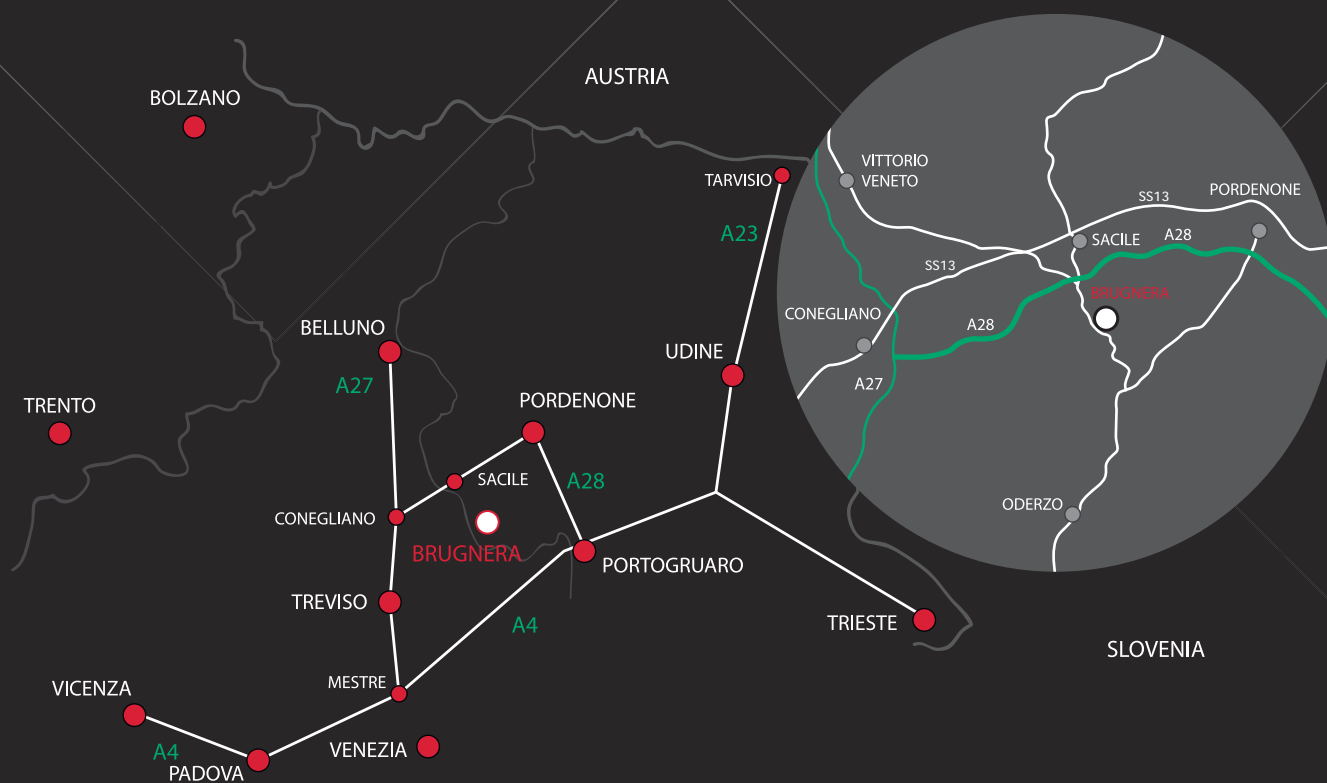


FINISHES



+ OTHER FINISHES AVAILABLE ON REQUEST

PART NO.	FINISHES	PART NO.	FINISHES	PART NO.	FINISHES
00	Insignificant finish	IF	Grey 7	XE	Inox
AA	Natural	IJ	Light Grey	YA	Nickel-plated
AB	White	IL	Grey 20	YC	Matt Nickel-plated
AE	White 9010	IN	Grey met. 26	YD	Satin-finished Nickel-plated
EA	Black	JG	Aluminium 5	YQ	Black Nickel
EC	Matt Black	JL	Aluminium PE 11	Z9	Black Zinc
EE	Anthracite	JM	Aluminium RAL 9006	ZN	Zinc-plated
EW	Grey 9007	KB	Bright Chrome	ZQ	Bright Gold
FU	Gunmetal	KC	Matt Chrome	ZZ	Clear/Transparent
FV	Gunmetal V52	LD	Brown 8019		
GR	Zamak Raw	RO	Red		
HA	Brass-Plated	UT	T-Met 9007		
HH	Tropicalized	UZ	T-Met		
HL	Raw Brass	WA	Bronzed		
HX	Graphite	WI	Burnished		
IA	Grey	XD	Satin-finished Steel		



www.italianaferramenta.com

ITALIANA FERRAMENTA SRL - Viale Europa 17 I - 33070 Brugnara (PN)
Tel. +39 0434 428211 Fax +39 0434 428242 E-mail: info@italianaferramenta.it